


	Document Technical Specification	version: v1.05 status: date: 2013-03-05
project title: USB Reader – Installing Driver		doc

USB READER



INSTALLING DRIVER

20130305_EN_UM - USB Reader - Installing Driver_v1.05.docx	created by: Stefan Detter	page: 1 von 5
---	---------------------------	---------------

	Document Technical Specification	version: v1.05 status: date: 2013-03-05
project title: USB Reader – Installing Driver		doc

1 Introduction

In some conditions the setup does not succeed in installing the RF-Embedded driver on the system. For this case the next chapters show how to install or activate the driver manually.

2 Linux


The most common Linux distributions come with an integrated module called “usbserial”. This module handles the translation from USB to serial. The only thing that has to be done to use this module with the RF-Embedded devices, is to tell the system to load the module once a RF-Embedded device is plugged in. This can be done by entering the following line into the terminal:

```
sudo modprobe usbserial vendor=0x1325 product=0xc02a
```

Note: Only root users can do this.

After the system was told to load this module for RF-Embedded devices and a device was plugged in, it can be located at /dev/ttyUSB0 .

20130305_EN_UM - USB Reader - Installing Driver_v1.05.docx	created by: Stefan Detter	page: 2 von 5
---	----------------------------------	----------------------

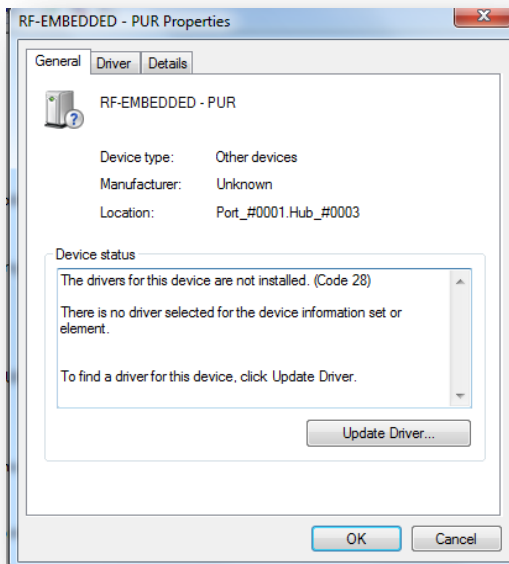
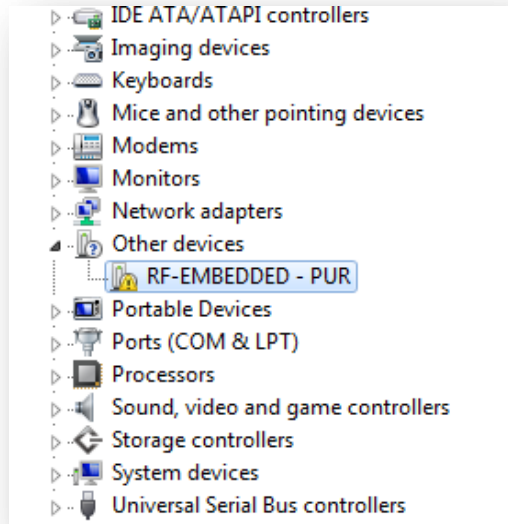
	Document Technical Specification	version: v1.05 status: date: 2013-03-05
	project title: USB Reader – Installing Driver	doc

3 Windows 7 (x86, x64)

To install the driver manually, you first need to open the Device Manager. The Device Manager can usually be found in the System Properties Dialog.

Once the Device Manager is open and the driver was not installed before, the plugged in reader is shown in the “Other devices” section.

The next step to install the driver is to open the properties of this device. This is done by right-click and selecting Properties. If this is selected, the following dialog opens up.

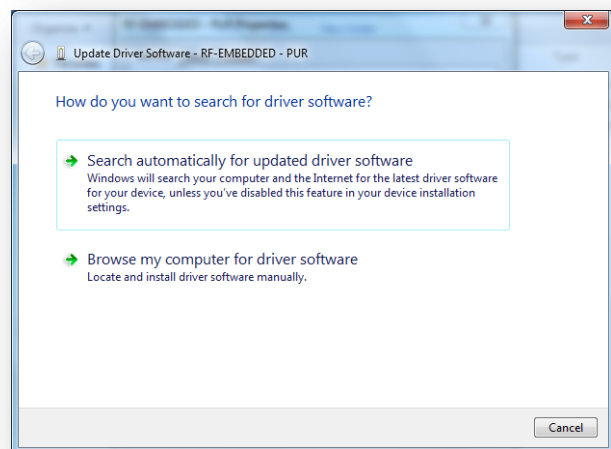


Once the dialog is opened, the next step is to install the driver for this device. To do this, click “**Update Driver...**”. This opens the install dialog.


The install dialog shows two options to install the driver:

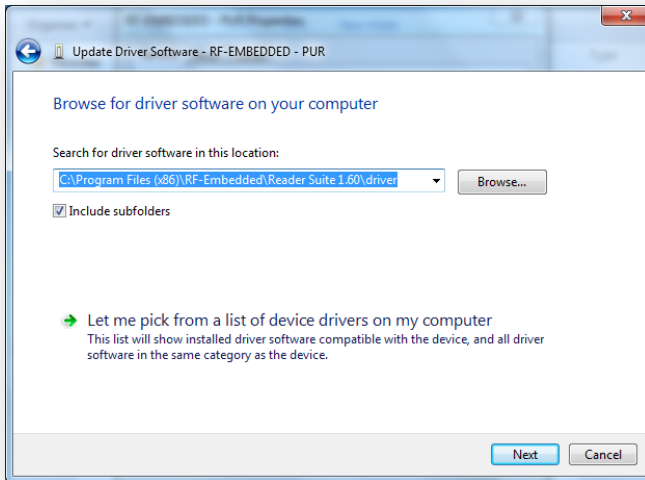
- Search automatically...
- Browse computer...

In this case the driver was copied to the computer during the installation, so select “**Browse my computer...**”.



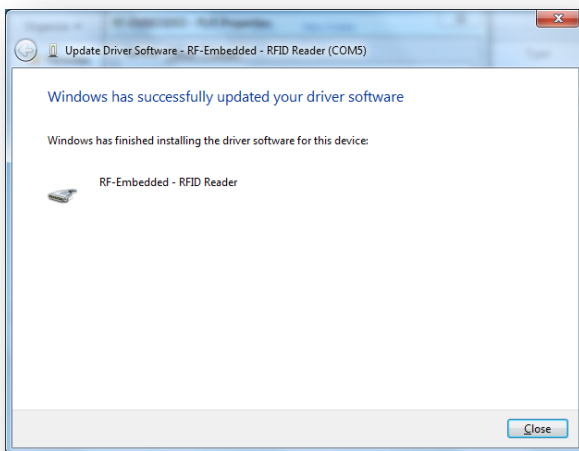
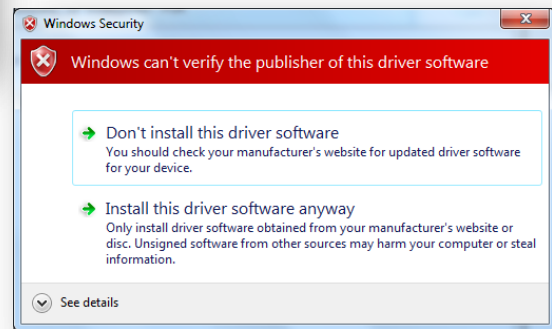
20130305_EN_UM - USB Reader - Installing Driver_v1.05.docx	created by: Stefan Detter	page: 3 von 5
--	----------------------------------	---------------

	Document Technical Specification	version: v1.05 status: date: 2013-03-05
	project title: USB Reader – Installing Driver	doc




In the next dialog just select the installation directory of the Reader Suite and the sub directory “**driver**” and press next.

Next up a dialog of the operating system opens that asks if the driver should be installed though it is not signed. To proceed the installation, press “**Install this driver...**”.



After a few moments the result of the installation is shown. If this was successful, the device can now be used.

20130305_EN_UM - USB Reader - Installing Driver_v1.05.docx	created by: Stefan Detter	page: 4 von 5
---	----------------------------------	----------------------

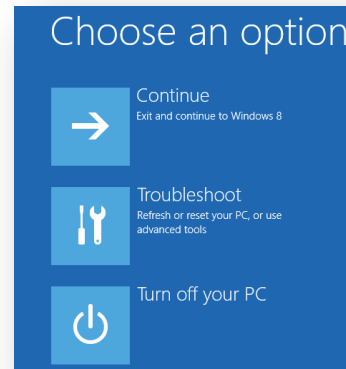
	Document Technical Specification	version: v1.05 status: date: 2013-03-05
	project title: USB Reader – Installing Driver	doc

4 Windows 8 (x86, x64)

Most Windows 8 installations do not allow the installation of unsigned driver by default. So the possibility to install unsigned drivers must be activated. The following steps show, how this can be done.

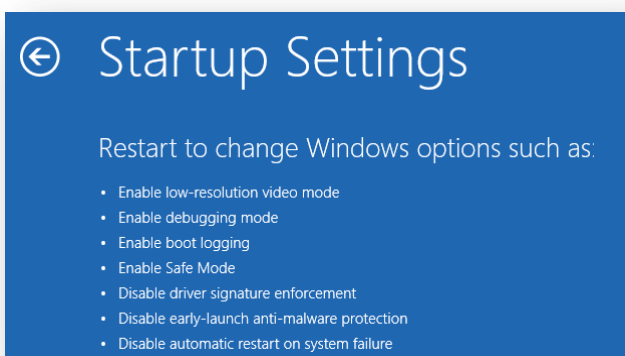
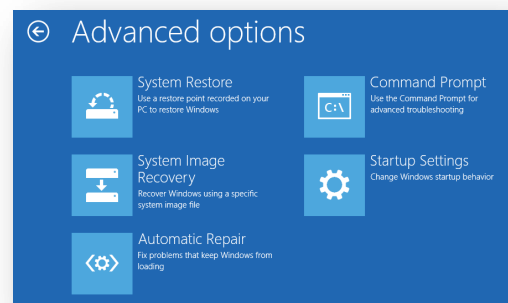
Use the “**Windows-Key + I**” keyboard shortcut to bring up the Setup and click “**Change PC settings**”.

Navigate to “**General**” and under “**Advanced Startup**”, click “**Restart Now**”. Now Windows 8 will restart in the advanced menu options, click on “**Troubleshoot**”.



Click on “**Advanced options**”.

Next, click the “**Startup Settings**” option from the menu.



The Startup Settings will allow you to change various Windows configuration options including: Enable Safe Mode, Enable low-resolution video mode, and what we need — Disable driver signature enforcement. From this page simply click “**Restart**”.

Now Windows 8 will reboot, but instead of going to the Desktop it will start in the Startup Settings page, from here hit F7 or the number 7. Then Windows will boot in a mode that will allow you to install unsigned device drivers in the operating system. This can be done like described in the Windows 7 section.

20130305_EN_UM - USB Reader - Installing Driver_v1.05.docx	created by: Stefan Detter	page: 5 von 5
--	----------------------------------	---------------